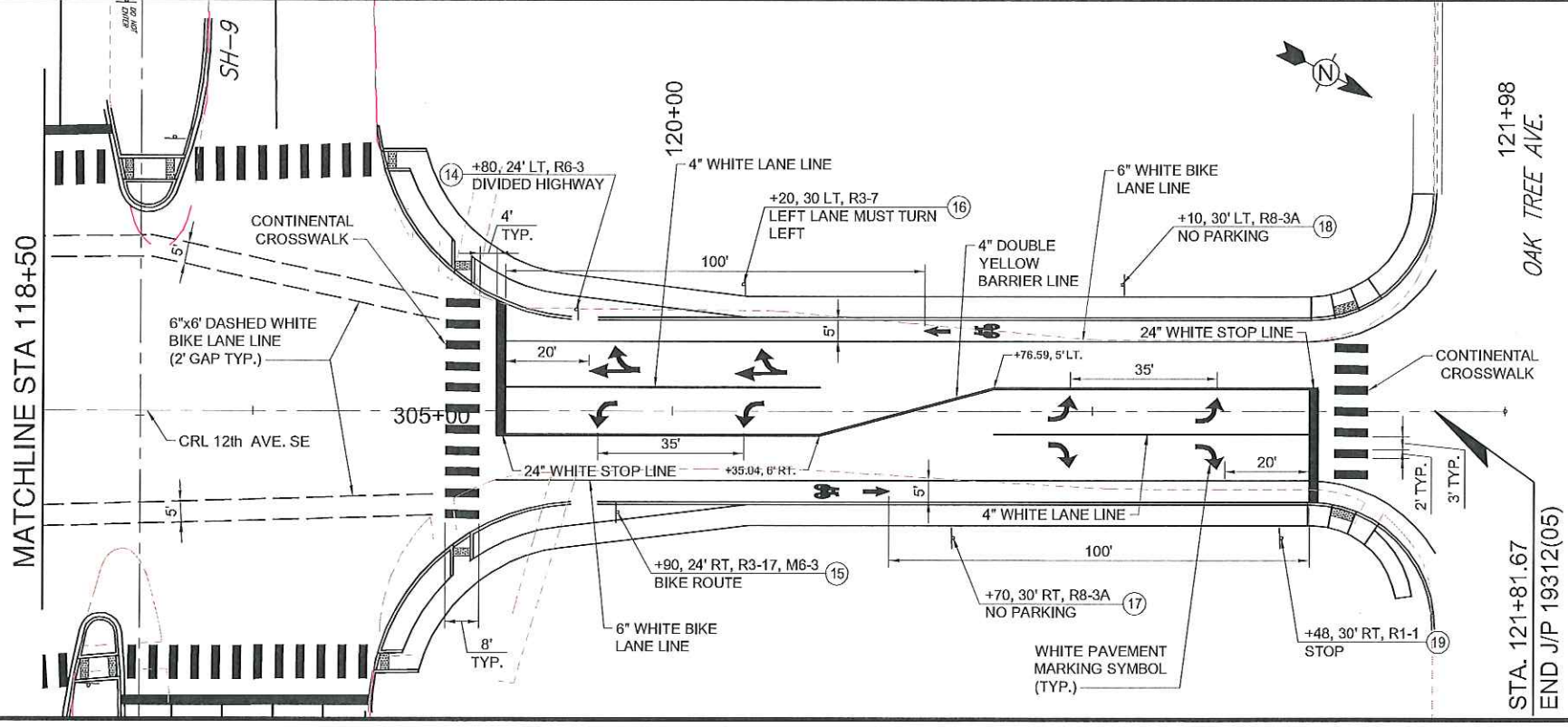
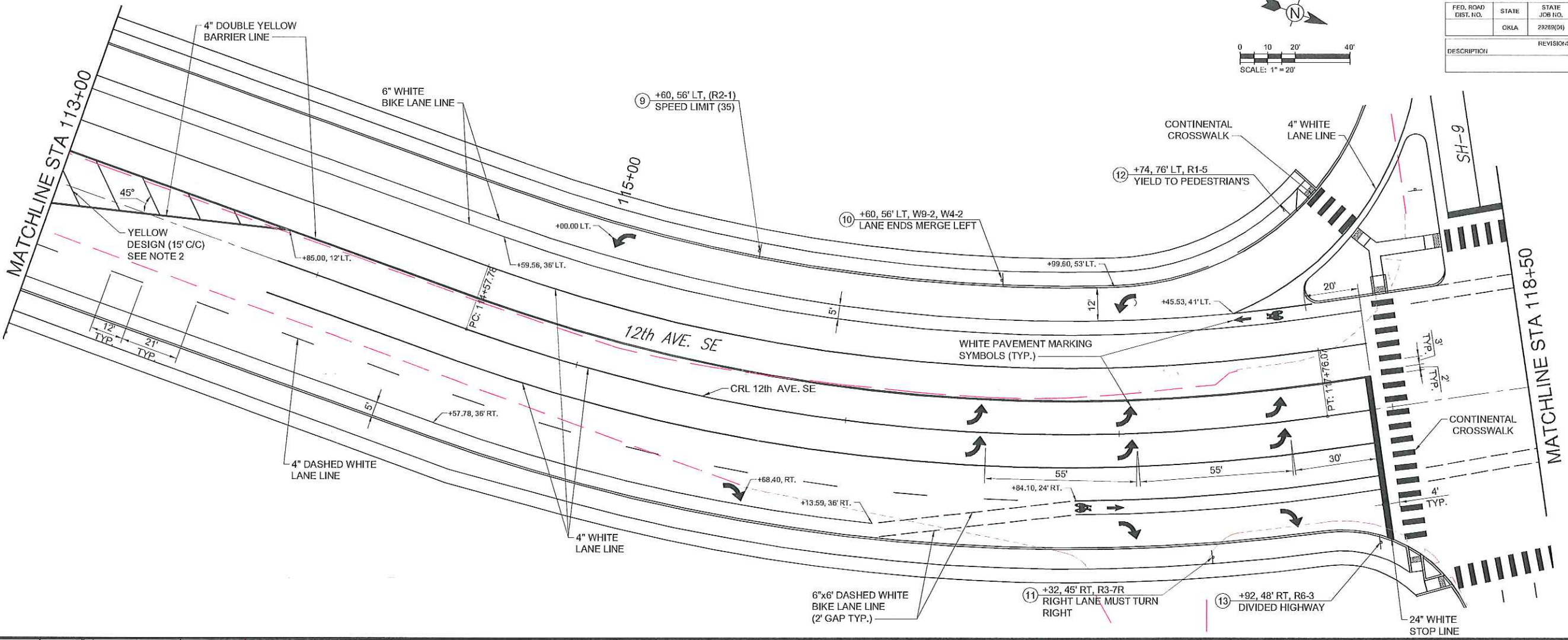
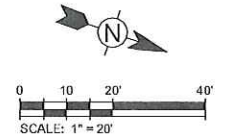


FED. ROAD DIST. NO.	STATE	STATE JOB NO.	FISCAL YEAR	SHEET NO.	TOTAL SHEETS
	OKLA	29289(04)		28	

DESCRIPTION	REVISIONS	DATE



- NOTES:**
- ALL PAVEMENT MARKINGS OVER CONCRETE SHALL BE MULTI-POLYMER AND MARKINGS OVER ASPHALT SHALL CONSIST OF HOT APPLIED THERMOPLASTIC COMPOUND IN ACCORDANCE WITH SEC. 855A OF THE ODOT SPECIFICATIONS.
 - WIDTH OF DIAGONALS ARE AS FOLLOWS:
 < 45 MPH - 8" WIDE

DESIGN	SKC
DRAWN	Tt
CHECKED	SKC
APPROVED	MNR
SQUAD	Tt

OKLAHOMA DEPARTMENT OF TRANSPORTATION

SIGNAGE & STRIPING PLAN

STATE JOB NO. 29289(04)

SHEET NO. 26

CLEVELAND COUNTY

2/16/2017 4:48:15 PM - P:\08512131\08512-13001\CAD\SHEETFILES\SIGNAGE & STRIPING PLAN.DWG - RODRIGUEZ, AMY